



MARLBOROUGH COLLEGE

# Teacher of Economics & Business

Information for candidates *for September 2025*





# Welcome from the Master

I am delighted that you are interested in joining the Marlborough College community as this flourishing, world class co-educational boarding school seeks to appoint a talented and driven professional to inspire pupils in its Economics and Business Department.

With an ambitious and talented staff body, and bright and able pupils, you will be part of a team which will work to pass on to Marlburians the drive and the aspiration to be the very best that they can be.

*Louise Moelwyn-Hughes*







# About the College

*Founded in 1843, Marlborough College offers boys and girls between the ages of 13 and 18 an exceptional, contemporary education set in a beautiful environment steeped in history.*

Situated at the western end of the Wiltshire market town of Marlborough, the College occupies 286 acres of beautiful and significant landscape.

Marlborough is the UK's largest co-educational full boarding school and draws pupils from across the UK and the world. The community comprises over 1011 pupils (almost all of whom are full boarders), 140 teaching staff, and over 400 non-teaching staff.

Our 16 boarding houses are at the heart of daily life for Marlburians. While each has its own distinctive culture and traditions, they share in a commitment to the promotion of the College's key values: community, ambition, service and initiative.

Academic ambition lies at the heart of our academic strategy. Marlburians should be inspired to achieve their full potential by highly capable and engaged teachers. The recent appointment of an Assistant Head (Teaching and Learning), as well as the opening of the Beko Innovation Centre, underpins our aim of putting both the craft of teaching and the science of learning front-and-centre of the College's academic life.

The recruitment of an energetic Teacher of Business and Teacher of Economics to inspire our pupils represents another important step in achieving this goal.

The successful candidate will be part of a supportive, committed and forward-thinking educational community.





# About the department

The Business and Economics Department has a long history of innovation, with Marlborough the first school in the UK to establish a Business Studies department.

The department is highly engaged in the College's wider commitment to excellence in teaching and learning. The department is exceptionally well resourced, with a strong degree of collaboration underpinning the work of the team delivering the course. Pupils receive outstanding support from teachers who are willing to work hard on their behalf.

## Staff and Setting

The department is staffed by seven specialist teachers, who teach either or both of Business and Economics. The department occupies a suite of purpose-built rooms in the Heywood building, which is shared with Philosophy and Maths, and in addition to teaching classrooms has a small conferencing/tutorial space. Business is popular with pupils in the Sixth Form, with around thirty pupils in each year group.

## Specification – Exdecél gBSO

The department recently moved to teaching the Pearson Edexcel A level course, which encourages pupils to follow business developments and think critically about contemporary business issues. The course deals with four themes: marketing and people, managing business activities, business decisions and strategy and global business.

## Outcomes

Results at the College are strong, and the Business department records excellent outcomes year-on-year, with 44% of Business pupils scoring A\*A, and 85% A\*B. Economics benefits from 63% A\*A and 93% A\*/B. The successful candidate would be expected to have the skills, talent and expertise to contribute to this level of success.



## Beyond the classroom

A very high percentage of pupils at Marlborough go on to study Business or related disciplines at some of the world's best universities, and an increasing number are choosing entrepreneurship as an alternative.

To support those pupils in their ambition, we have a flourishing Economics and Business Society, through which we organise talks and curriculum enriching activities for our pupils. Recent speakers have included Joanna Jensen founder of Child's Farm and Jeremy Herrman, CEO of Ferox Capital. Rob Reames, Business Development Director for Alpro; Simon Woodroffe, founder of Yo! Sushi; Jo Bertram, former North European Director of Uber; and Charles Rolls, founder of Fever Tree.

In addition, the department has offered a non-examined course in business and entrepreneurship, and teachers in the department also support the Extended Project Qualification where pupils choose to focus on business related topics. The successful candidate should have the skills and ability to make a strong contribution to the academic enrichment provided by the department.



# About the role

This is an exciting opportunity to lead a thriving department and to enhance the teaching of Economics and Business at Marlborough.

The successful candidate will be an excellent classroom practitioner who can inspire pupils in this crucial discipline.

Academic ability and rigour, a passion for learning and an enthusiastic approach to classroom teaching will be vital qualities for the successful applicant. This is an exciting opportunity for a dynamic teacher with high expectations.

The additional generic responsibilities of teachers at the College are outlined in a separate document which should be read in conjunction with this job description to have a full picture of the role and responsibilities.

Further, members of the Common Room at Marlborough are expected to play a significant part in the pastoral and co-curricular life of a thriving full boarding school.

## Teachers should:

- contribute to the design and delivery of an ambitious and innovative curriculum
- play a role in delivering key College-wide initiatives
- be alert to the opportunities to extend and enrich pupils' experience, through talks, trips and other appropriate events and their own expertise.
- be committed to a high level of pedagogical and professional development.

## The Ideal Candidate

The successful candidate should have:

- experience as, or the potential to become an outstanding teacher. Applications from those in day or boarding, maintained or independent schools are equally welcome.
- a clear passion for Business/ Economics and an ability to communicate that to pupils
- a capacity to lead and inspire others
- a capacity for innovation and confidence in working collaboratively
- a willingness to contribute to the pastoral and co-curricular life of the College







# Essential information

## Benefits

The College offers a sector-leading range of benefits for teachers, including:

- pay scales substantially above those in the maintained sector, with salaries set according to qualifications and experience
- local accommodation (including council tax) which is provided as part of the package for the better performance of duties\*\*
- meals each day in Norwood Hall (term time)
- membership of Private Healthcare\*
- substantial support for professional development

\*Benefit in kind and subject to tax

\*\*Dependent on availability (*also treated as a benefit in Kind and is subject to tax*)

## How to apply

For further information about this role, please click on the 'Documents Available' button (where you will find the full Role Description and Person Specification).

If you would like to have an informal chat about the role, please contact Duncan Andrew, Head of Business and Economics at [dia@marlboroughcollege.org](mailto:dia@marlboroughcollege.org) or Dan Clark, Deputy Head (Academic) [dtc@marlboroughcollege.org](mailto:dtc@marlboroughcollege.org)

To apply, please click on the 'Apply' button.

For enquiries regarding the application process, please contact a member of the People team at [thepeopleteam@marlboroughcollege.org](mailto:thepeopleteam@marlboroughcollege.org)

Any offer of employment would be subject to references satisfactory to the College, an enhanced Disclosure & Barring Service check, proof of right to live and work in the UK, and evidence of stated qualifications.





# Living in Marlborough

Marlborough is an incredibly beautiful place to live, at the heart of an area of outstanding natural beauty.

Marlborough features regularly in lists of the most desirable places to live in the UK and anyone who visits will understand why. The High Street (reputed to be Britain's second widest) is a bustling and eclectic place, with a wide range of independent retailers competing alongside larger national names.

Each Saturday and Wednesday, the High Street hosts a charter market which has been a feature of life in the town since 1204.

There is a thriving gastronomic culture in the town with big names such as Rick Stein as well as a host of local independent offerings.

Culturally, the town also excels. Each year, Marlborough Lit Fest attracts famous names and interesting speakers. A boutique cinema opened

in 2021 (The Parade) which shows blockbusters as well as National Theatre Live performances.

The major local primary schools are St Mary's CE Primary School, close to the High Street, and Preshute Primary School in the village of Manton just a little over a mile from town.

There are many local prep schools too. St Francis School is in nearby Pewsey, St Margaret's Prep is in Calne (both of which offer fee remission for the children of teachers at the College), while a little further afield, Pinewood and Cheam are also popular destinations for staff children.

There are lots of outstanding outdoor pursuits in this part of the Wiltshire, including the Savernake Forest, The Ridgeway and Avebury's World Heritage Trail.

## Connections

Swindon is a 25-minute drive away and has regular trains to Bristol (20 minutes), Reading (30 minutes) and London Paddington (one hour). While there is no longer a train station in the town, the nearby stations at Pewsey and Great Bedwyn are served by Great Western Railway services to London and Wales, Devon and Cornwall.

By car, the M4 is eight miles to the north, and there are favourable driving times to Bath and Bristol (1 hour) as well as to the south coast (around 90 minutes).

The town is also well served for airports, with Heathrow, Bristol and Southampton all within 90 minutes of the High Street.





# Professional development

The College is strongly committed to the professional development of its staff and has a programme of internal and external CPD available to all.

Building a lifelong love of learning and developing a culture of increased academic ambition amongst our pupils lie at the heart of the College's strategic plan. Crucial to achieving this goal is sustaining and supporting a talented, engaged and driven Common Room who deliver excellence in the classroom.

The wealth of knowledge and expertise among our teachers is our most valuable resource for professional development. We are developing a culture in which teachers discuss and apply pedagogical theory and practice to develop professionally and ensure pupils have an experience of the best that traditional methods can bring, alongside the most impactful of new teaching strategies.

In recent years, we have had external speakers to share insights on our pedagogical priorities. Last year, Dr Dylan Wiliam spoke about assessment for learning, and Inner Drive shared ideas for maximising learning. As well as external speakers, there are more informal ways of accessing professional development. The

'Academic Book Group' meet over dinner to discuss books, articles, and podcasts on all areas of teaching and learning and pastoral care, and the members of the 'Professional Development Programme' also meet to explore areas of teaching and learning and leadership. All teachers have access to the 'Teaching and Learning Hub' which has numerous resources about teaching and learning and the Librarian is always happy to order books related to professional practice.

All teachers are members of a Teaching and Learning Team and assigned a Teaching and Learning Leader. These teams support professional collaboration across the Common Room and the exchange of best practice.

In addition to the many internal channels for CPD, the College has generous provision to support external training, including financial support for those who wish to undertake advanced degrees to further their professional development.







# About our community

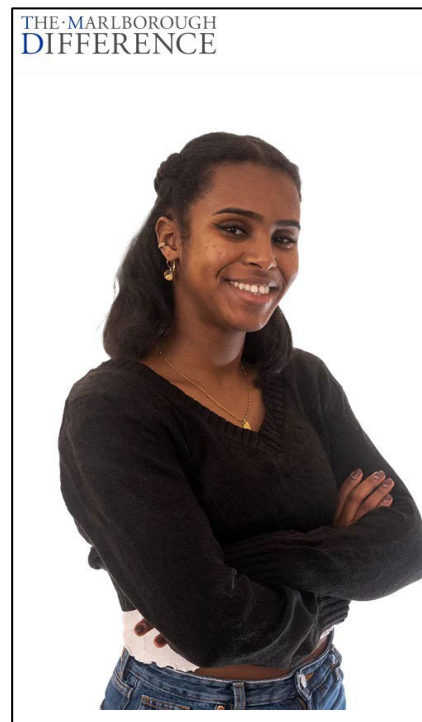
Marlborough is committed to creating a diverse and inclusive school community.

Marlborough is a friendly and inclusive community welcoming staff and pupils from all over the world and from a diverse range of backgrounds.

We aim to create a full boarding community that celebrates our pupils, staff and families without exception and regardless of gender, ethnicity, social background, religion, age, physical ability, sexual orientation, or nationality.

Our commitment to diversity, equity and inclusion means that all will find the same sense of belonging and benefit from the same opportunities.

Our commitment to diversity and inclusion is reflected in *The Marlborough Difference* campaign which is seeking to raise £75 million to



## Safeguarding – a priority for all

Safeguarding is led by our full-time Deputy Head (Safeguarding) Mrs Christine Kane, who is also the Designated Safeguarding Lead. She is supported by a team of Deputy DSLs, who are drawn from the many areas of College life.

Marlborough's aspiration is to be an outstanding school, where safeguarding threads through all aspects of school life. To this end, we aim:

- to maintain a whole school culture of openness and transparency
- to encourage vigilance and a sense of shared responsibility for the duty of care to protect children and young people
- to develop an aspirational approach to pastoral care, delivering the highest standards of proactive, consistent and individual attention
- never to think pupil pastoral care and safeguarding is someone else's job: pupils feel safe and supported because the whole school shares this commitment

